

- ✦ You probably own many digital devices including a scanner, camera, printer and video camera.
- ✦ You work with software from all the leading Vendors including Adobe, Xpress, Corel and Microsoft.
- ✦ You need cross-platform compatibility in mixed OS X and Windows environments.

YOU NEED TO GET THEM ALL SEEING THE SAME THING

PerfX Color management Pro™ will make it possible to achieve PerfXion!

PerfX Colour Management Pro will create beautiful ICC profiles you can use to exchange accurate colour data between all your output devices from printing press and wide format ink jet printer to scanners, cameras, video and desktop color printers. Compatible with all DTP and imaging software.

Key features:

- Advanced control over black generation.
- Unlimited number of color swatches in the profiling target.
- Specially designed and optimized for the pre-press and print industry.



TGLC
Gestion de couleur
Color management

WWW.TGLC.COM

Feature List



Achieve prepress and print PerfXion



From Input
To Output



General

- Available for Mac OS X™ and Windows™.
- Uses proprietary artificial Intelligence module for color calculation and interpolation.
- Save the complete profiling session for further reference, remote support and backup.
- Customizable guidelines help you through the entire profiling process.
- Option to create 8 or 16 bit ICC profiles.
- Option to set the default Rendering Intent in the ICC profile.

Input Profiling

- Create scanner and digital camera ICC profiles.
- Supports all available input targets*.
 - IT8 and custom Reflective and Transparency targets
 - TGLC PerfX RX Target Wide Gamut™
- Allow user to create custom Input targets.
- Statistical Data report on-screen and within special ICC profile Tag:
 - DeltaE accuracy under 2, 4 and 6 deltaE

Output Profiling

- Supports all available output targets*.
 - * with target definition file using the CGATS standard
- Custom page setup for output target.
- Option to randomize color patches for any output target.
- Creates CMY (RGB) and CMYK ICC profiles for output devices.
- Creates ICC printer profile using a scanner as the measuring instrument.
- Creates ICC profile for any CMYK printing process.
 - litho offset, flexography, newsprint, screen printing, sublimation, etc.
- Black generation presets.
- Custom Black Generation settings:
 - Total Ink coverage, Black Start, Maximum Black, Black Weight and GCR
- Linearization option for CMYK and CMY (RGB) output devices.
- Statistical Data Report on-screen and in special ICC profile Tag:
 - DeltaE accuracy under 2, 4 and 6 deltaE
 - 2D Gamut and comparison with other ICC profiles
 - Gray Balance curves graph
 - CMYK densities and Dot Gain values for each color
 - Gray Balance values for 1/4, 1/2 and 3/4 tones
- Colorant Clipping option to limit or clip the maximum highlight and shadow values for each CMYK primary color.
- Add important reference colors to the output profiling target.
- Option to add statistical and color reference data within a special ICC profile tag.



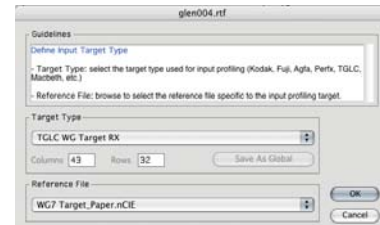
Screen captures



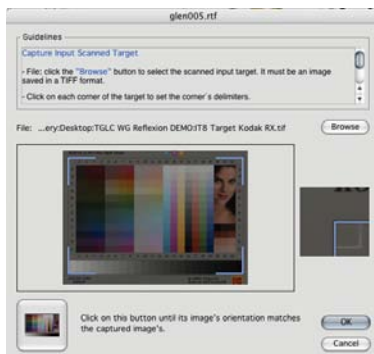
INPUT PROFILING



Main interface for Input profiling



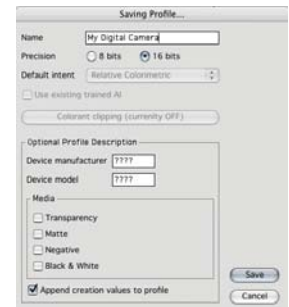
Choosing the Input target type



Capturing the input target (scanner)



Capturing the input target (camera)



Saving the Input profile



Input profile Statistics



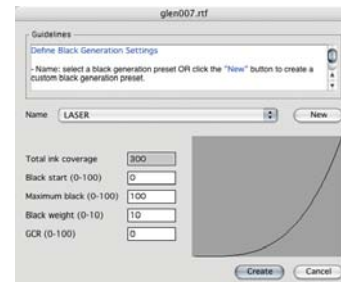
Screen captures



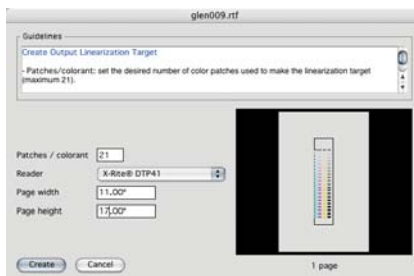
OUTPUT PROFILING



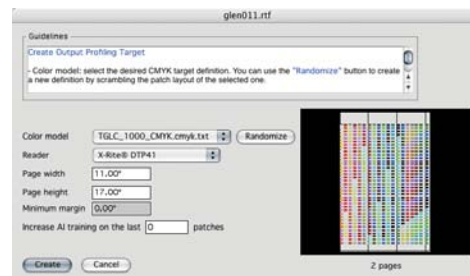
Main interface for Output profiling



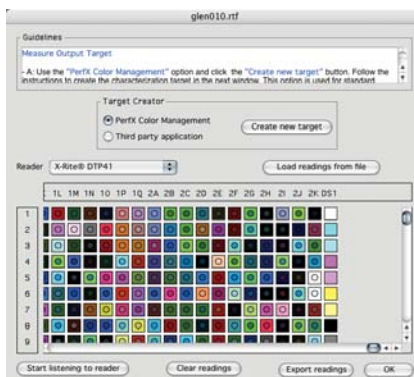
Presetting the Black Generation



Creating the Linearization target



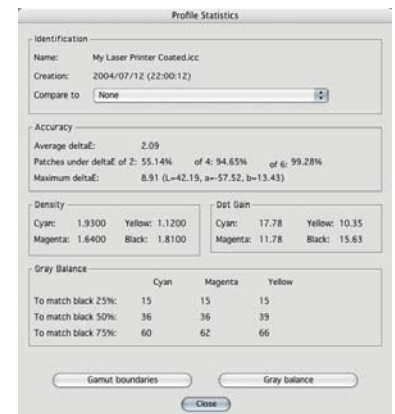
Creating the Output target



Measuring the Output target



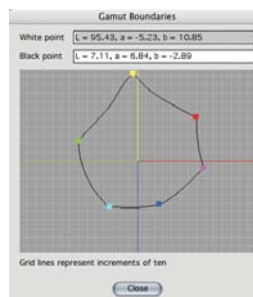
Saving the Output profile



Output profile Statistics



Gray Balance Curves



Gamut Boundaries



Compatibility



Operating systems

- Apple Macintosh OS X
 - System 10.2 or higher
 - 256 MB of available RAM
 - 24-bit display
 - 100 MB of available hard-disk space
 - USB 2.0 port

or

- Microsoft Windows
 - Windows 2000 or XP
 - 256 MB of available RAM
 - 24-bit display
 - 100 MB of available hard-disk space
 - USB 2.0 port

Input (scanner and digital camera) Profiling

- Supports all available input targets*
 - IT8 and custom Reflective and Transparency targets
 - Gretag Macbeth Color Checker™
 - TGLC PerfX RX Target Wide Gamut™
 - Custom Input targets

Output Profiling

- Supports all available output targets*
 - * with target definition file using the CGATS standard
 - PM, MO, PO, etc.
 - Custom Output targets

Measuring instruments

- X-Rite
 - DTP 41 automated strip reader, spectrophotometer
 - DTP 22 Digital Swatchbook, handheld spectrophotometer
- GretagMacbeth
 - Eye1 (available soon)

