



The perfect solution for the graphic design production

- ✦ You probably own many digital devices:  
Scanner, camera, printer or video camera
- ✦ You work with software from all the leading  
Vendors including Adobe, Xpress, Corel and Microsoft.
- ✦ You need cross-platform compatibility in mixed  
OS X and Windows environments
- ✦ You have many document files from clients;

## YOU NEED TO GET THEM ALL SEEING THE SAME THING

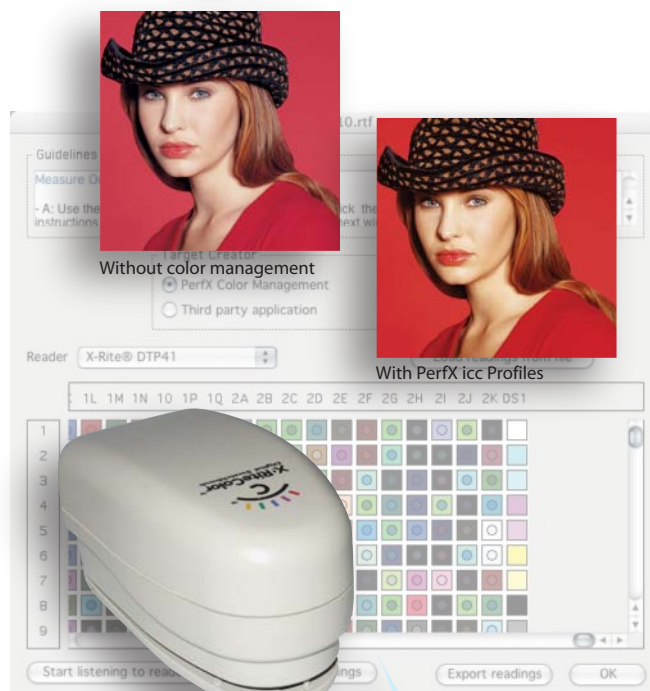
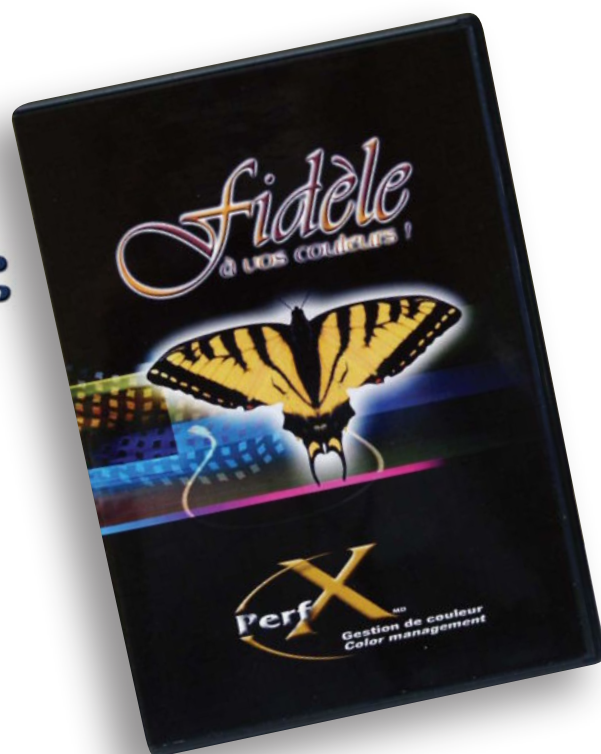
**PerfX Color management Studio™  
is your solution!**

PerfX Colour Management Studio will create accurate ICC profiles that pass accurate colour data between all your digital tools, software and devices.

This "Studio" version allows to create ICC profile for inkjet and laser printers, scanner and digital camera.

### Key features:

- Presets for inkjet and laser type of black generation
- Limited to 750 color swatches for the profiling target
- Specially designed for the graphic design and photography industry



**WWW.TGLC.COM**

## Feature List



The perfect solution for the graphic design production



From Input  
To Output



### General

- Available for Mac OS X™ or Windows™.
- Use proprietary artificial Intelligence module for color calculation and interpolation
- Save the complete profiling session for further reference, remote support and backup.
- Customizable guidelines helping you during the entire profiling process
- Option to create 8 or 16 bit ICC profiles.
- Option to set the default Rendering Intent in the ICC profile

### Input Profiling

- Creates scanner and digital camera ICC profiles.
- Supports all kind of input targets available on the market\*
  - IT8 and custom Reflective and Transparency targets
  - TGLC PerfX RX Target Wide Gamut™
- Statistical Data Report on screen and in special ICC profile Tag:
  - DeltaE accuracy under 2, 4 and 6 deltaE

### Output Profiling

- Uses profiling target of 600 color patches or less\*(1).
- Custom page setup for output target.
- Option to randomize color patches for any output target.
- Creates CMY (RGB) and CMYK ICC profiles for output devices
- Creates ICC printer profile with a scanner as the measuring instrument
- Creates ICC profile for any inkjet or laser color printers\* (2).
- Built-in Black generation presets for inkjet mat, gloss and color laser\* (3).
- Linearization option for CMYK and CMY (RGB) output devices
- Statistical Data Report on screen and in special ICC profile Tag:
  - DeltaE accuracy under 2, 4 and 6 deltaE
  - 2D Gamut and comparison with other ICC profiles
  - Gray Balance curves graph
  - CMYK densities and Dot Gain values for each color
  - Gray Balance values for 1/4, 1/2 and 3/4 tones
- Option to add statistical and color reference data within a special ICC profile TAG.

### \* Compared to PerfX Color Management Pro™

- Allows to create custom Input targets
- (1) Can use other profiling targets available on the market\*
  - \* with target definition file using the CGATS standard
- (2) Creates ICC profile for any CMYK printing process like litho offset, flexography, newsprint, screen printing, sublimation, etc.
- (3) Custom Black Generation settings:
  - Total Ink coverage, Black Start, Maximum Black, Black Weight and GCR
- Colorant Clipping option to limit or clip the maximum highlight and shadow values for each CMYK primary color
- Add important reference colors to the output profiling target



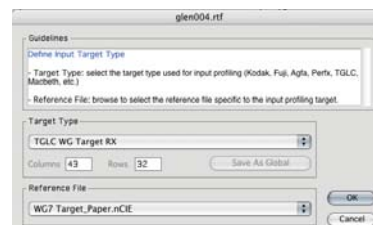
# Screen captures



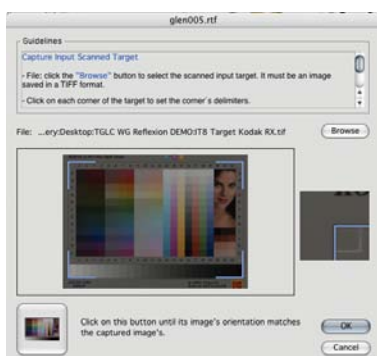
## INPUT PROFILING



Main interface for Input profiling



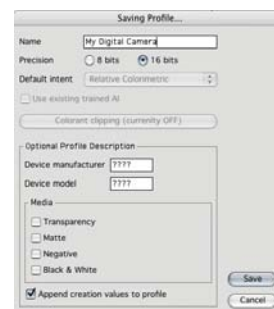
Choosing the Input target type



Capturing the input target (scanner)



Capturing the input target (camera)



Saving the Input profile



Input profile Statistics





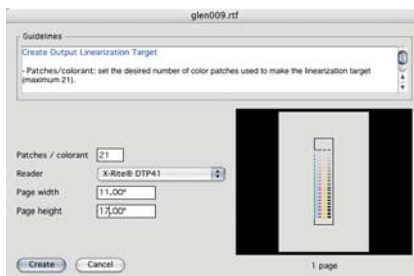
# Screen captures



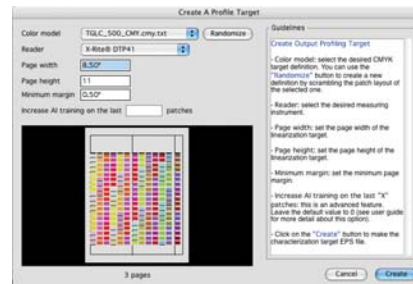
## OUTPUT PROFILING



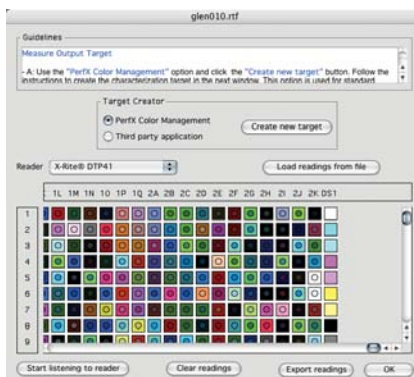
Main interface for Output profiling



Creating the Linearization target



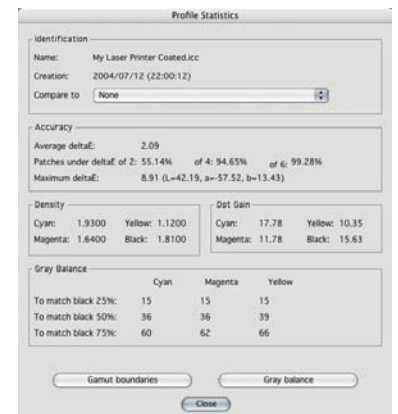
Creating the Output target



Measuring the Output target



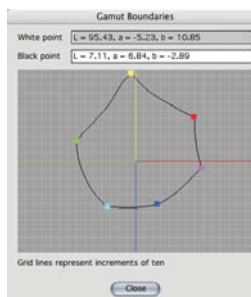
Saving the Output profile



Output profile Statistics



Gray Balance Curves



Gamut Boundaries



## Compatibility



### Operating systems

- Apple Macintosh OS X
  - System 10.2 or higher
  - 256 MB of available RAM
  - 24-bit display
  - 100 MB of available hard-disk space
  - USB 2.0 port
- or
- Microsoft Windows
  - Windows 2000 or XP
  - 256 MB of available RAM
  - 24-bit display
  - 100 MB of available hard-disk space
  - USB 2.0 port

### Input (scanner and digital camera) Profiling

- Supports all kind of input targets available on the market\*
  - IT8 and custom Reflective and Transparency targets
  - Gretag Macbeth Color Checker™
  - TGLC PerfX RX Target Wide Gamut™

### Output Profiling

- Support other output profiling targets with no more than 600 color patches\*.
  - \* with target definition file using the CGATS standard

### Measuring instruments

- X-Rite
  - DTP 41 automated strip reader, spectrophotometer
  - DTP 22 Digital Swatchbook, handheld spectrophotometer
- GretagMacbeth
  - Eye1 (available soon)

