



Device Link Pro

TGLC
LOGICIEL
SOFTWARE



Why TGLC ?

Because we created color management software and built our expertise getting our hands dirty like you did, when you built your business. For 15 years, we have applied our technologies, on site with the same tools and operators that you are using. We have trained, implemented, and innovated color management with unique artificial intelligence driven software.

Your competition will not tell you about us.

They are already using TGLC products and expertise to achieve a more profitable business with higher quality results. This is how they gain an edge over their competitors.

Why would they tell anyone ?

Device Link Pro

PerfX Device Link Pro™ is the perfect tool to create ICC DeviceLink profiles. This type of ICC profile is commonly used to reparate CMYK colors, in order to optimize the color reproduction based on the type of printing process, paper and ink used for printing.

ICC DeviceLink profiles also allows to save ink when using GCR (Gray Component Replacement) color separation method and total ink coverage limit as low as 200%!

ICC DeviceLink profiles, compatible with most of the professional workflow RIPs, allows to preserve many color attributes of original documents like preserving the black channel in Black only after CMYK to CMYK conversion, color compared to color conversions made with simple ICC profiles.

PerfX Device Link Pro™ also allows to create ICC DeviceLink profiles for RGB to CMYK conversions, in order to reproduce RGB neutral grays using the black ink only!

The perfect tool for color optimization while saving inks, production time on press or large format inkjet printer.

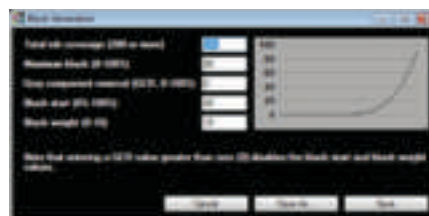
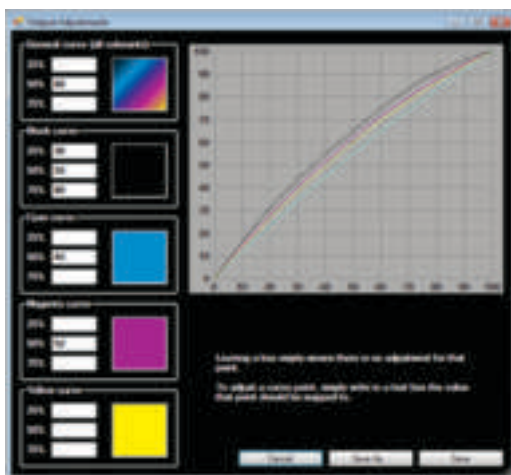
- Intelligent, green and ecological.
- No need of an external specialized server, just a prepress workflow compatible with ICC DeviceLink profiles!



Features

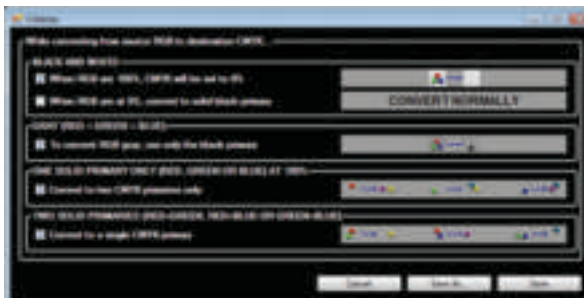
CMYK to CMYK

- Preserve Cyan, Magenta, Yellow and Black solid colors as well as any of their respective tint %.
- Preserve overprint Red, Green and Blue solid colors as well as any of their respective tint %.
- Preserve White (0%) as White 0%.
- Preserve duplex and triplex color like Cyan to Black or Red to Black shades.
- Preserve registration color (100% CMYK).
- Preserve undercolor solid Black.
- Custom Black generation (UCR / GCR) OR preserve existing ICC black generation.
- CMYK output curve editing (global or for individual color).



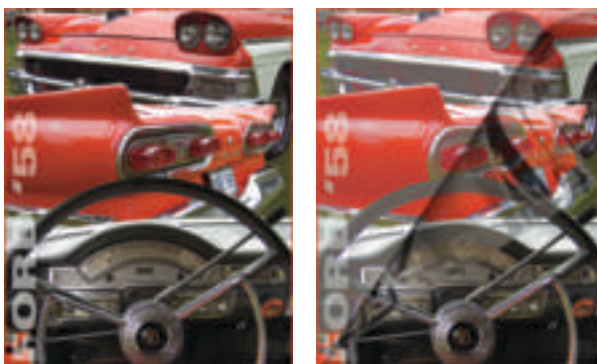
RGB to CMYK

- Convert RGB primary colors to solid CMY, like Red = 100M + 100Y.
- Convert RGB secondary colors (cyan, magenta, yellow) to solid C, M and Y.
- Convert RGB Grays to Black only while preserving shadow density (D MAX).

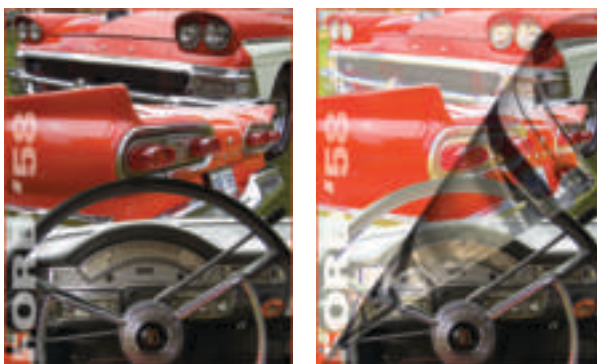


Before and After

CMYK SEPARATION
WITHOUT INK SAVING



CMYK SEPARATION
WITH INK SAVING



View it, proof it, print it... you will SEE!

We provide the tool and samples... do others do?

DEMO IMAGES FILES (High resolution) available to download
at the following link: http://www.tglc.com/english/PerfX/Image_ink_Saving.html

Workflow for conventional and digital printing

- 1) Create and ICC DeviceLink profile with PerfX Device Link Pro™ software
- 2) Select the new ICC DeviceLink profile as the CMYK Source profile in your compatible prepress RIP
- 3) Process your jobs as usual





Benefits

More profits

Increased production with the same amount of ink, shorter make-ready time, less paper waste, and more printed jobs per day.

Better quality, more vivid colors

With TGLC's Smart GCR™, vivid colors are separated using less complementary colors while using more black for darker shades. Reds, for example, are made with less Cyan in darker shades. This makes reds less «dirty».

Up to 30% ink savings

GCR (Gray Component Replacement) and lower ink coverage are used to reduce the amount of ink needed to reproduce colors. GCR replaces a large amount of CMY inks with Black ink, in neutral and less saturated colors. So more Black, and less Cyan, Magenta and Yellow. Lower ink coverage allows you to limit the amount of CMYK ink used to create dark shadows while keeping the same maximum density. Total ink limit as low as 240 can usually reproduce original colors with no loss of color details and accuracy. In order to get the optimal ink savings, both factors (GCR and TIC) should be used simultaneously for CMYK separation or repurposing. It makes our printing industry more ecologically friendly.

Faster makeready

With less ink and better gray balance, makeready can be set up within minutes! Also, GCR helps to minimize color variations throughout the print run and lower ink coverage provides faster ink drying.

Easy to set up

PerfX Device Link™ is very simple to use and the ICC DeviceLink profiles are very easy to set up in existing compatible workflows. Simply install the profiles, select the newly created CMYK to CMYK ICC DeviceLink profile in the Source CMYK menu, and you are set! RGB to CMYK source ICC DeviceLink profiles can also be created by PerfX Device Link™. No need to have an external dedicated server with complex configurations!

Quality improvement

PerfX Device Link™ is very simple to use and the ICC DeviceLink profiles are very easy to set up in existing compatible workflows. Simply install the profiles, select the newly created CMYK to CMYK ICC DeviceLink profile in the Source CMYK menu, and you are set! RGB to CMYK source ICC DeviceLink profiles can also be created by PerfX Device Link™. No need to have an external dedicated server with complex configurations!

More loyal clientele

PerfX Device Link provides quality improvement of the rendered color and faithful reproduction of images of very high quality. Consequently this opens great opportunities for a higher quality of product, and becomes an important tool to retain loyal clients.

Equipment optimisation

PerfX Device Link by its simple utilization and its instant savings, optimizes the capacities of your equipment as well as the productivity of team members. An advantage in a difficult economic environment where competition is fierce and increasingly growing.



TGLC inc.
945, Newton Avenue, #226
Quebec (Quebec) CANADA
G1P 4M3
Tel.: 1 418 877-9114 • 1 877 677-9114
Fax: 1 418 877-1661
info@tglc.com
www.tglc.com

TGLC

**LOGICIEL
SOFTWARE**